

2005-08 ACCESSORIES AND EQUIPMENT

Frame - RL

FRAME BRACE REPLACEMENT

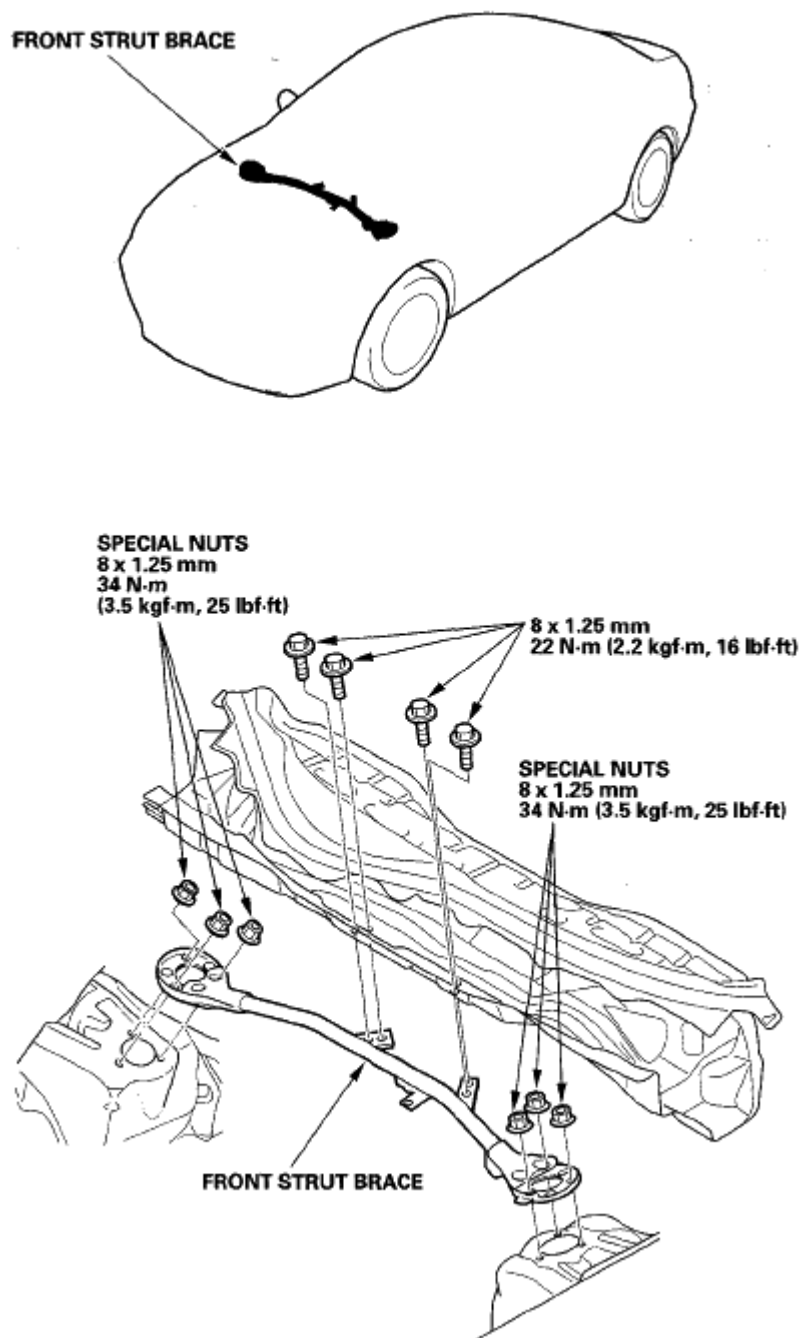


Fig. 1: Identifying Frame Brace Components With Torque Specifications
Courtesy of AMERICAN HONDA MOTOR CO., INC.

SUBFRAME REPLACEMENT

Special Tools Required

Frame positioning guide pin 070AG-SJAA10S

FRONT SUBFRAME TORQUE

After removing the subframe mounting bolts and front suspension subframe rear bracket mounting bolts, be sure to replace them with new ones.

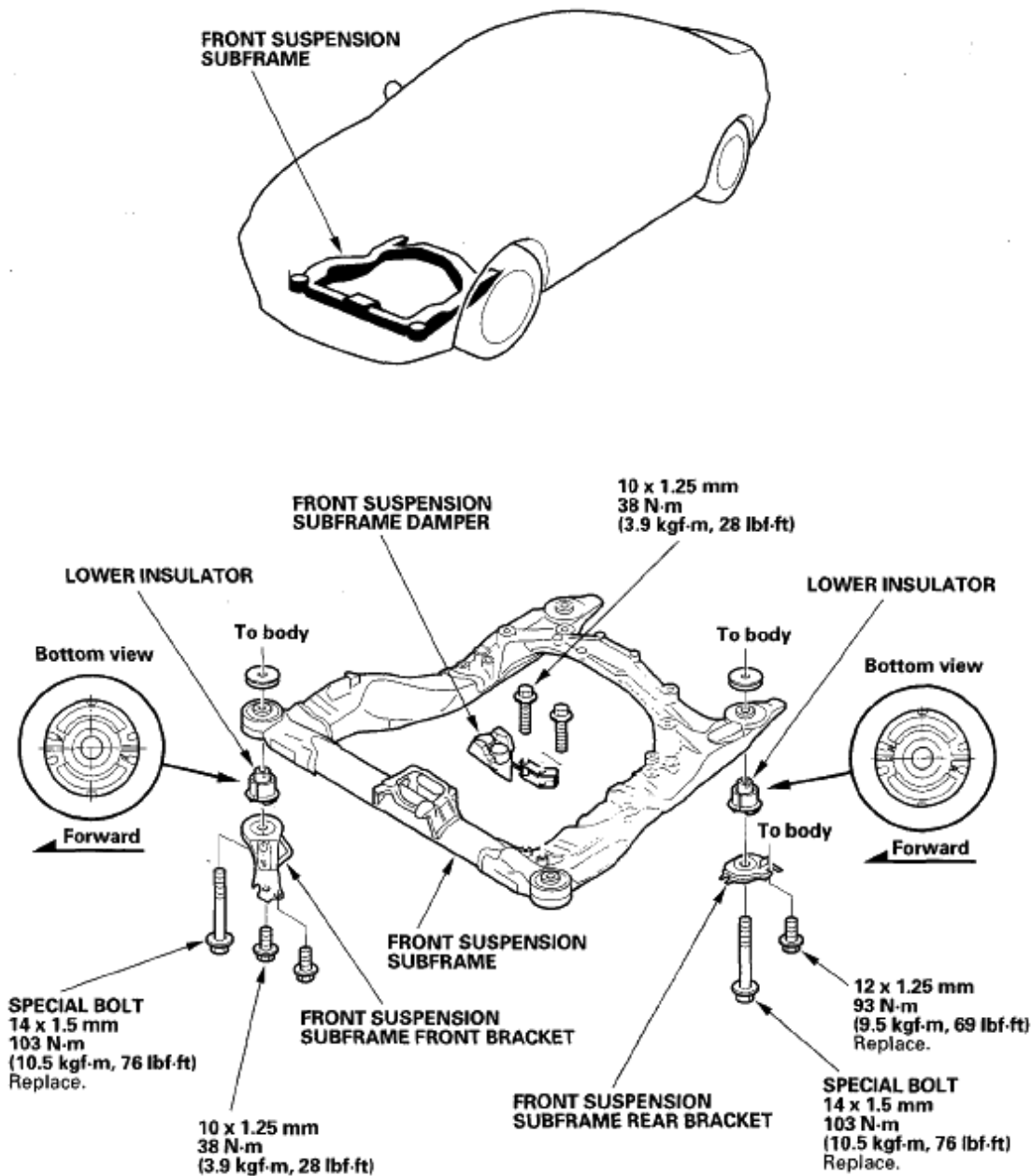


Fig. 2: Identifying Subframe Components With Torque Specifications
 Courtesy of AMERICAN HONDA MOTOR CO., INC.

FRONT SUBFRAME ALIGNMENT

NOTE: Using the special tool, make the front suspension subframe alignment as the following sequence.

1. Make the front suspension subframe (A) alignment.
 1. Lift the front suspension subframe up to the body, and loosely install the new subframe mounting bolts and the brackets (B).
 2. Insert the alignment pin (C) into the alignment hole in the right rear of the subframe, and then align the subframe with the body.
 3. Loosely tighten the subframe mounting bolt (D) at the right rear.
 4. Insert the alignment pin into the alignment hole in the left rear of the subframe, and then align the subframe with the body.
 5. Loosely tighten the subframe mounting bolt (E) at the left rear.
 6. Loosely tighten both front subframe mounting bolts (F).
 7. Insert the alignment pin into the alignment hole in the right rear of the subframe.
 8. Loosen the subframe mounting bolt at the right rear, and fit the lower insulator (G), in the subframe, and then tighten the mounting bolt to the specified torque values.
 9. Tighten the remaining subframe mounting bolts and the bracket mounting bolts (H) to the specified torque values.

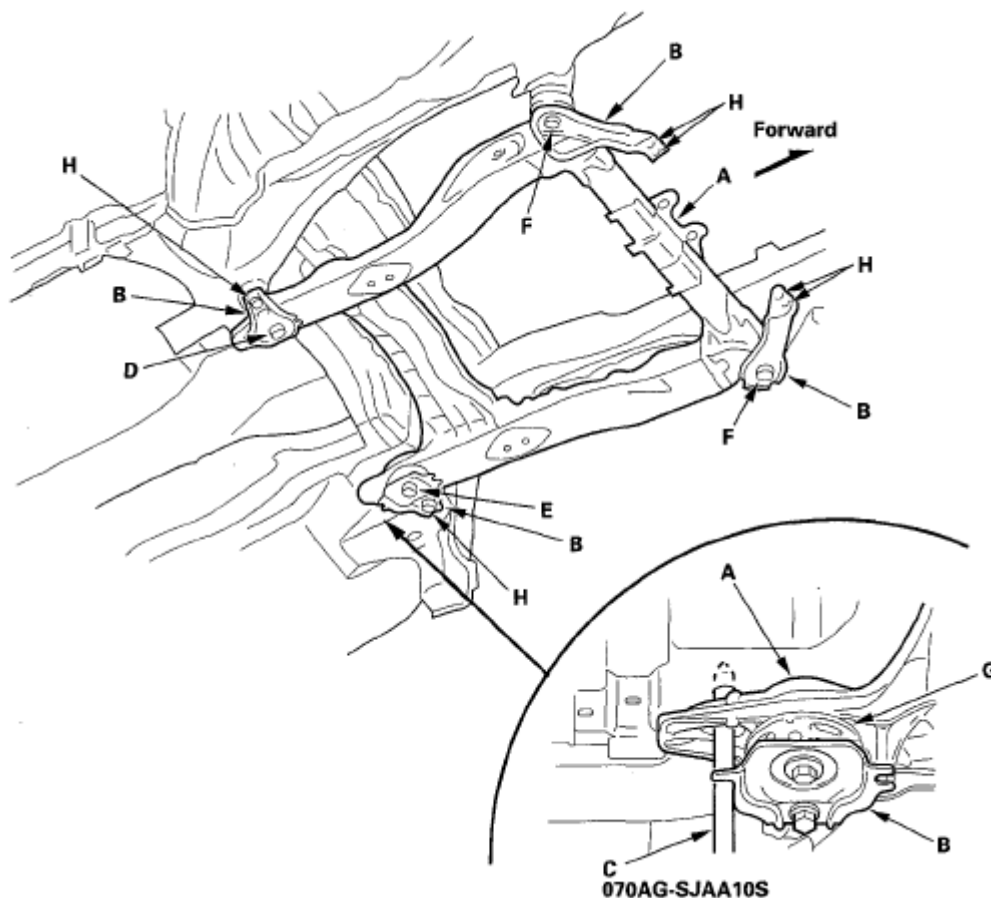


Fig. 3: Identifying Front Subframe Components
Courtesy of AMERICAN HONDA MOTOR CO., INC.

2. After reinstalling all removed parts, check and adjust the front wheel alignment (see **WHEEL ALIGNMENT**).

REAR SUBFRAME TORQUE

After removing the subframe mounting bolts, be sure to replace them with new ones.

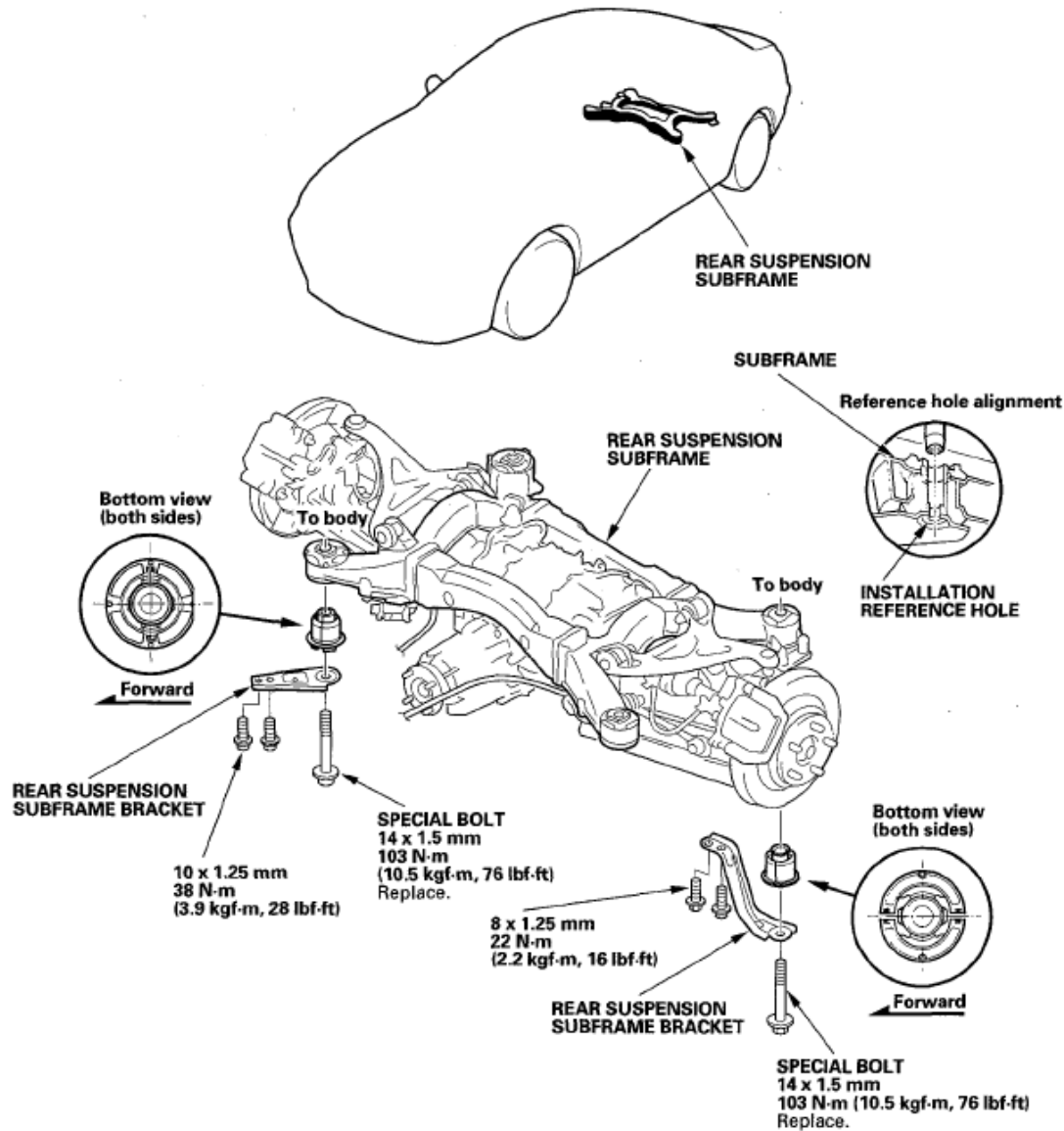


Fig. 4: Identifying Rear Subframe Components With Torque Specifications
Courtesy of AMERICAN HONDA MOTOR CO., INC.

FRAME REPAIR CHART

TOP VIEW

2007 Acura RL

2005-08 ACCESSORIES AND EQUIPMENT Frame - RL

Unit: mm (in.)

ø: Inner diameter

- | | | | |
|----|---|----|-------------------------------------|
| a | For front subframe ø16 (0.63) | g | Locating hole ø15 (0.59) |
| b | Locating hole ø25 (0.98) | h | For front subframe ø16 (0.63) |
| c1 | For engine side mount ø13 (0.51) right side | i | Locating hole ø25 (0.98) |
| c2 | For engine side mount ø15 (0.59) right side | j | Locating hole ø25 (0.98) |
| c3 | For engine side mount ø15 (0.59) right side | k1 | Locating hole ø15 (0.59) left side |
| d | Front damper center ø50 (1.97) | k2 | Locating hole ø15 (0.59) right side |
| e | For upper arm ø11 (0.43) | t | For CBS mount ø11 (0.43) |
| f | For upper arm ø11 (0.43) | | |

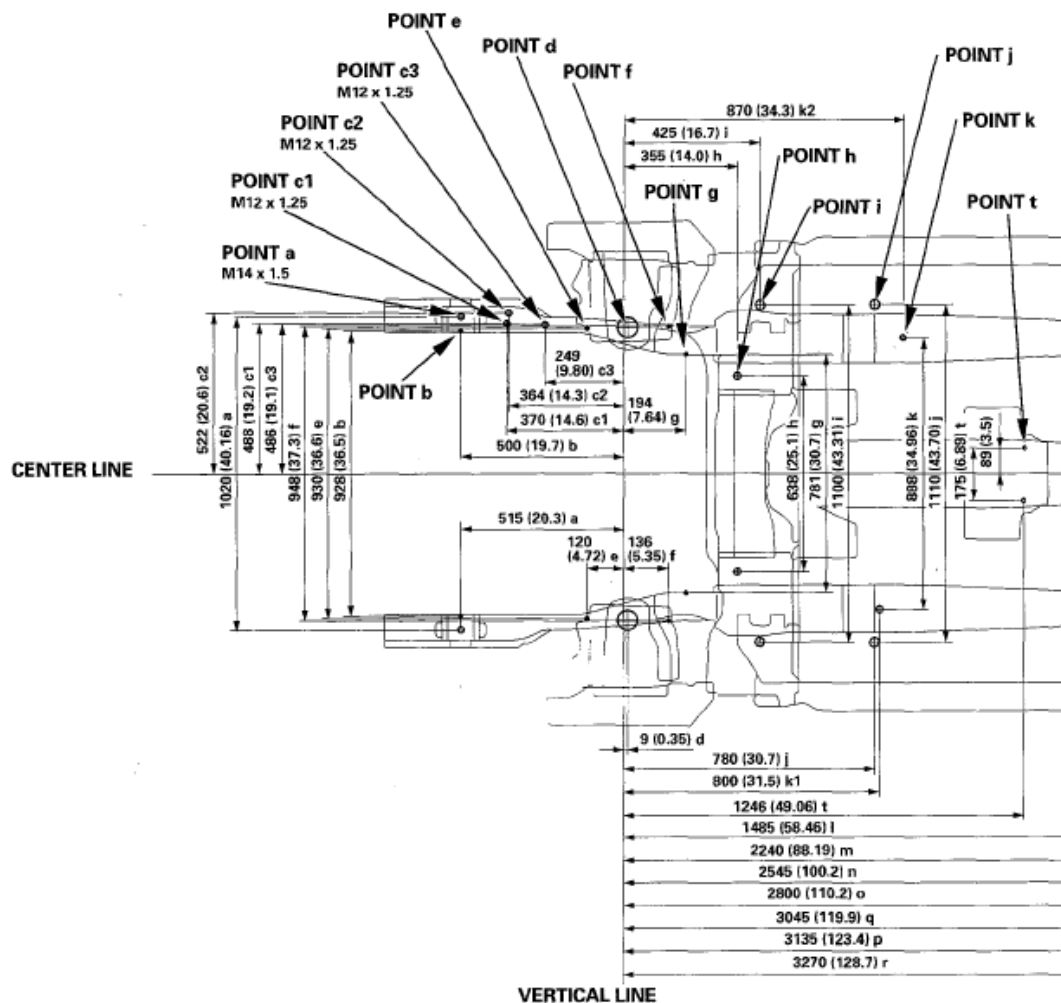


Fig. 5: Frame Repair Chart - Top View (1 Of 2)
 Courtesy of AMERICAN HONDA MOTOR CO., INC.

2007 Acura RL

2005-08 ACCESSORIES AND EQUIPMENT Frame - RL

- l Locating hole $\phi 25$ (0.98)
- m Locating hole $\phi 20$ (0.79)
- n For rear subframe $\phi 26.1$ (1.03)
- o Rear damper center $\phi 59.5$ (2.34)
- p For rear subframe $\phi 26.1$ (1.03)
- q Locating hole $\phi 20$ (0.79)
- r Locating hole $\phi 25$ (0.98)

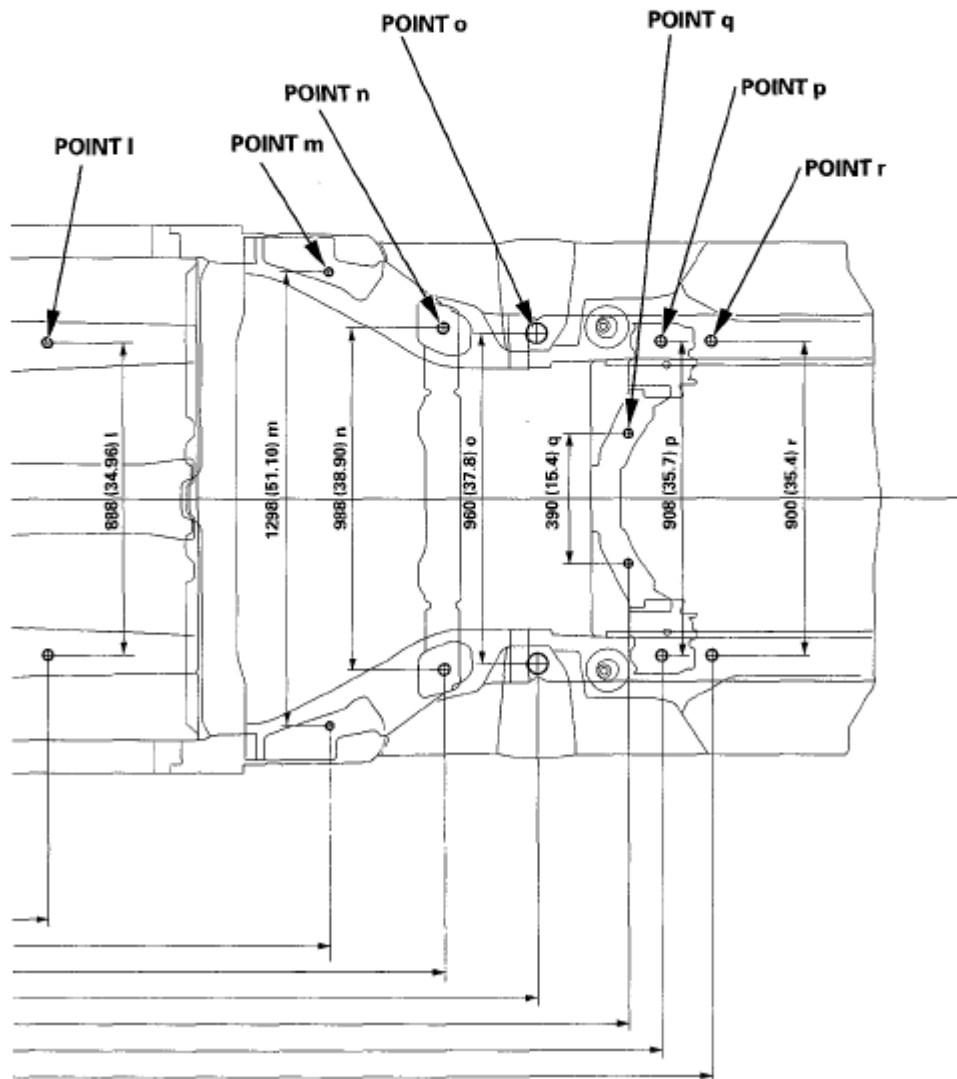


Fig. 6: Frame Repair Chart - Top View (2 Of 2)
 Courtesy of AMERICAN HONDA MOTOR CO., INC.

SIDE VIEW

2007 Acura RL

2005-08 ACCESSORIES AND EQUIPMENT Frame - RL

Unit: mm (in.)

ø: Inner diameter

- | | | | |
|----|---|----|-------------------------------------|
| a | For front subframe ø16 (0.63) | g | Locating hole ø15 (0.59) |
| b | Locating hole ø25 (0.98) | h | For front subframe ø16 (0.63) |
| c1 | For engine side mount ø13 (0.51) right side | i | Locating hole ø25 (0.98) |
| c2 | For engine side mount ø15 (0.59) right side | j | Locating hole ø25 (0.98) |
| c3 | For engine side mount ø15 (0.59) right side | k1 | Locating hole ø15 (0.59) left side |
| d | Front damper center ø50 (1.97) | k2 | Locating hole ø15 (0.59) right side |
| e | For upper arm ø11 (0.43) | t | For CBS mount ø11 (0.43) |
| f | For upper arm ø11 (0.43) | | |

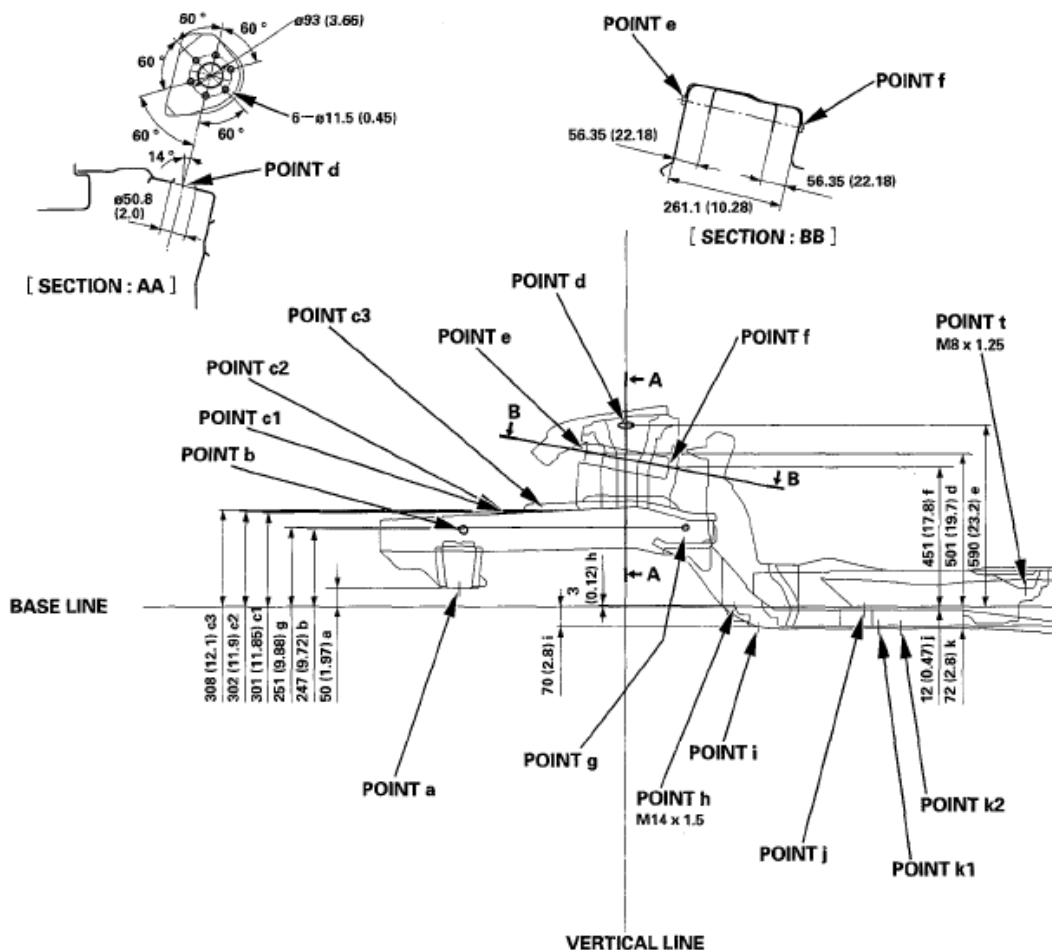


Fig. 7: Frame Repair Chart - Side View (1 Of 2)

Courtesy of AMERICAN HONDA MOTOR CO., INC.

2007 Acura RL

2005-08 ACCESSORIES AND EQUIPMENT Frame - RL

- l Locating hole $\phi 25$ (0.98)
- m Locating hole $\phi 20$ (0.79)
- n For rear subframe $\phi 26.1$ (1.03)
- o Rear damper center $\phi 59.5$ (2.34)
- p For rear subframe $\phi 26.1$ (1.03)
- q Locating hole $\phi 20$ (0.79)
- r Locating hole $\phi 25$ (0.98)

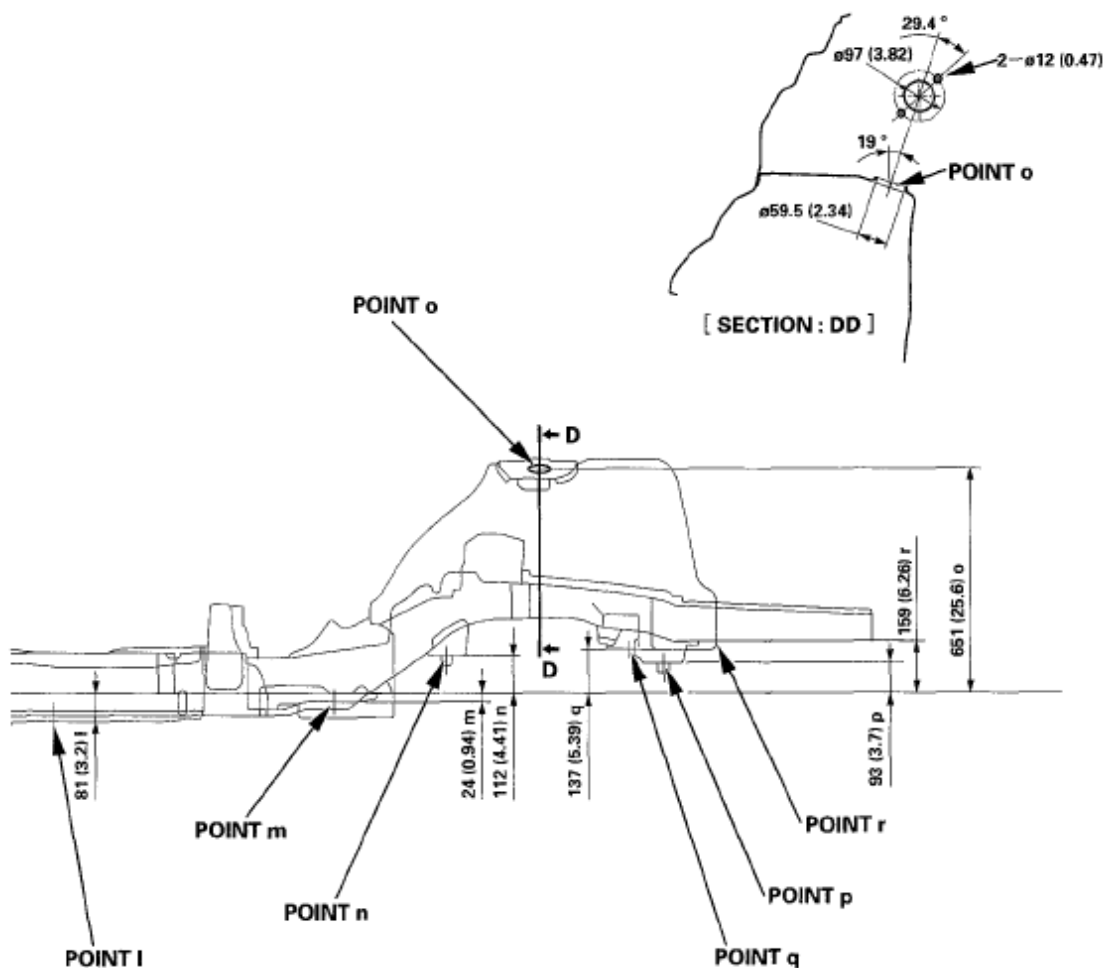


Fig. 8: Frame Repair Chart - Side View (2 Of 2)

Courtesy of AMERICAN HONDA MOTOR CO., INC.

SUPPLEMENTAL RESTRAINT SYSTEM (SRS) (If HVAC maintenance is required)

The Acura RL SRS includes a driver's airbag in the steering wheel hub, a passenger's airbag in the dashboard above the glove box, seat belt tensioners in the front seat belt retractors, side curtain airbags in the sides of the roof, and side airbags in the front seat-backs. Information necessary to safely service the SRS is located in the **SRS (SUPPLEMENTAL RESTRAINT SYSTEM)** article. Items marked with an asterisk (*) include or are located near SRS components. Servicing, disassembling, or replacing these items requires special precautions and tools, and should be done by an authorized Acura dealer.

2007 Acura RL
2005-08 ACCESSORIES AND EQUIPMENT Frame - RL

- To avoid rendering the SRS inoperative, which could lead to personal injury or death in the event of a severe frontal or side collision, all SRS service work should be done by an authorized Acura dealer.
- Improper service procedures, including incorrect removal and installation of the SRS, could lead to personal injury caused by unintentional deployment of the airbags and/or side airbags.
- Do not bump or impact the SRS unit, front impact sensors, or side impact sensors when the ignition switch is ON (II), or for at least 3 minutes after the ignition switch is turned OFF; otherwise, the system may fail in a collision, or the airbags may deploy.
- SRS electrical connectors are identified by yellow color coding. Related components are located in the steering column, front console, dashboard, dashboard lower panel, in the dashboard above the glove box, in the front seats, in the roof side, and around the floor. Do not use electrical test equipment on these circuits.